

## SUPER-TIE ROPE HANGER

PART NO.	FITS CASINGS	ACCEPTS ROPE	WEIGHT	CTN	CASE	LIST PRICE-A
STRH-6	6" & 6-1/4" I.D.	1/4" - 3/8"	1.30 lb	5	20	18.13

NOTE: Brass easy tie rope adapters are available - See Section 4

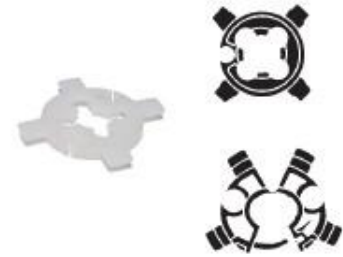


## CABLE GUARDS

Cable guards will keep the power cable from abrading against the well casing. Minimum of 3 should be used per system; one at the pump, one at a max. of 15 ft. above the pump and one about 25 to 35 ft. above the pump. Furnished in 6" size, tabs can be cut off to fit 4" and 5" well casing also.

PART NO.	MODEL	DROP PIPE	UNIT WEIGHT	QUANTITY CASE	LIST PRICE-A
WG-6	Snap-In	1 & 1-1/4"	1.5 oz	100	1.17
WG-100	Self-Clamping	1"	2.0 oz	48	5.24
WG-125	Self-Clamping	1-1/4"	2.0 oz	48	7.68

Snap-in cable guard (WG-6) will fit 1" & 1 1/4" drop pipe while the self-clamping cable guard WG-100 will only fit 1" pipe and WG-125 will only fit 1-1/4" pipe.



## PVC DROP PIPE COUPLINGS

- Machined using extruded PVC coupling stock
- Wall thickness is 30% heavier than Schedule 120 to ensure increased strength and reliability
- Note: To be used in well depths no greater than 400'

PART NO.	SIZE	OVERALL LENGTH	QUANTITY CTN CASE	WGT. PER 100 PCS.	LIST PRICE-A
28-PDPC-10	1"	2-3/4"	10 250	12 lbs	2.30
28-PDPC-12	1-1/4"	2-3/4"	10 200	14 lbs	2.78
28-PDPC-15	1-1/2"	2-3/4"	15	25 lbs	5.74
28-PDPC-20	2"	3"	10	34 lbs	6.29



## BRASS DROP PIPE COUPLINGS

- Inside chamfer on both ends for trouble free starting of threads
- Separate taper to ensure proper watertight seal
- Flats on sides for ease of use with wrench
- Heavy duty construction

PART NO.	SIZE	OVERALL LENGTH	QUANTITY CTN CASE	WGT. PER 100 PCS	LIST PRICE-A
28-BDPC-10	1"	2-1/2"	10 50	76 lbs	13.96
28-BDPC-12	1-1/4"	2-1/2"	10 50	92 lbs	16.38
28-BDPC-15	1-1/2"	2-1/2"	5 25	122 lbs	23.06
28-BDPC-20	2"	2-1/2"	5 25	141 lbs	25.36



## STAINLESS STEEL DROP PIPE COUPLINGS

- Inside chamfer on both ends for trouble free starting of threads
- Separate taper to ensure proper watertight seal
- Flats on sides for ease of use with wrench
- Heavy duty construction 304 Stainless Steel

PART NO.	SIZE	OVERALL LENGTH	QUANTITY CTN CASE	WGT. PER 100 PCS	LIST PRICE-A
28-SSDPC-10	1"	2-1/2"	10 50	72 lbs	10.38
28-SSDPC-12	1-1/4"	2-1/2"	10 50	87 lbs	12.33
28-SSDPC-15	1-1/2"	2-1/2"	10 50	116 lbs	15.71
28-SSDPC-20	2"	2-1/2"	5 25	134 lbs	18.45

